

The background of the image shows a library or archive setting. In the foreground, there are several stacks of papers and folders, some with yellow sticky notes. In the background, there is a wooden door with a grid pattern and silver handles. The overall scene is well-lit and organized.

# Austin College Department of Archives & Special Collections

*Center for Southwestern & Mexican Studies Abell  
Library Internship Summer 2019*

# The John D. Moseley Collection

...ed by other people. (A.C. Bulletin 78-79)  
... is accomplished through a traditional approach  
... along with with community living and  
... Academic Environment

**Educational program:**  
Scholar must be free to pursue truth  
under the discipline and responsibility  
of scholarly profession.

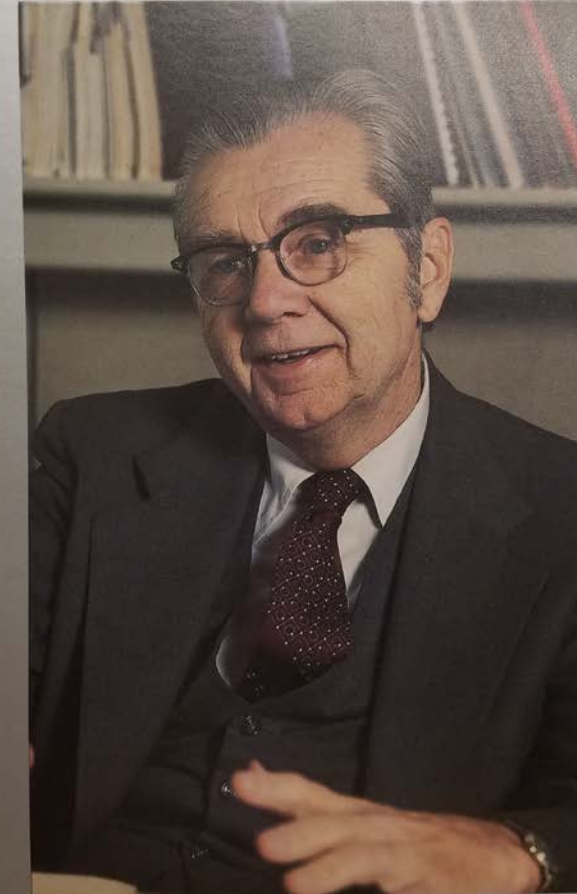
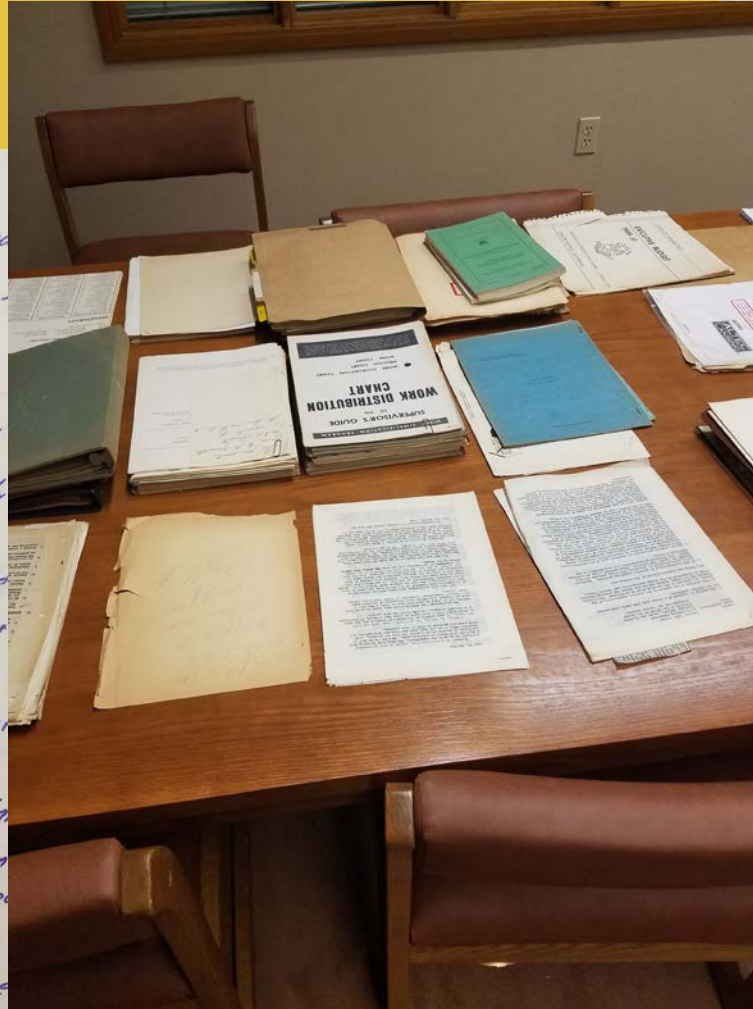
Vehicle of growth is a curriculum based  
of liberal arts and sciences, in the per  
the faith, with emphasis on individual  
ness of Knowledge, and incorporating ex  
periences outside the classroom.

Approach to individualized educational plan  
student is consultation with the men  
credit in J.D. during the senior year

The educational program

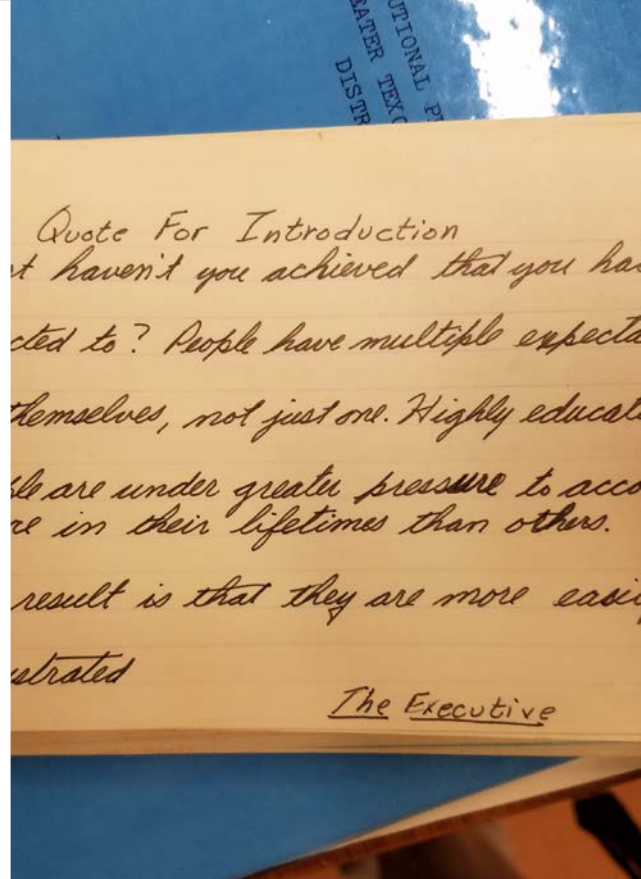
- ① broadens scope of student deve
- ② includes more varied and more studen

... modes of ...



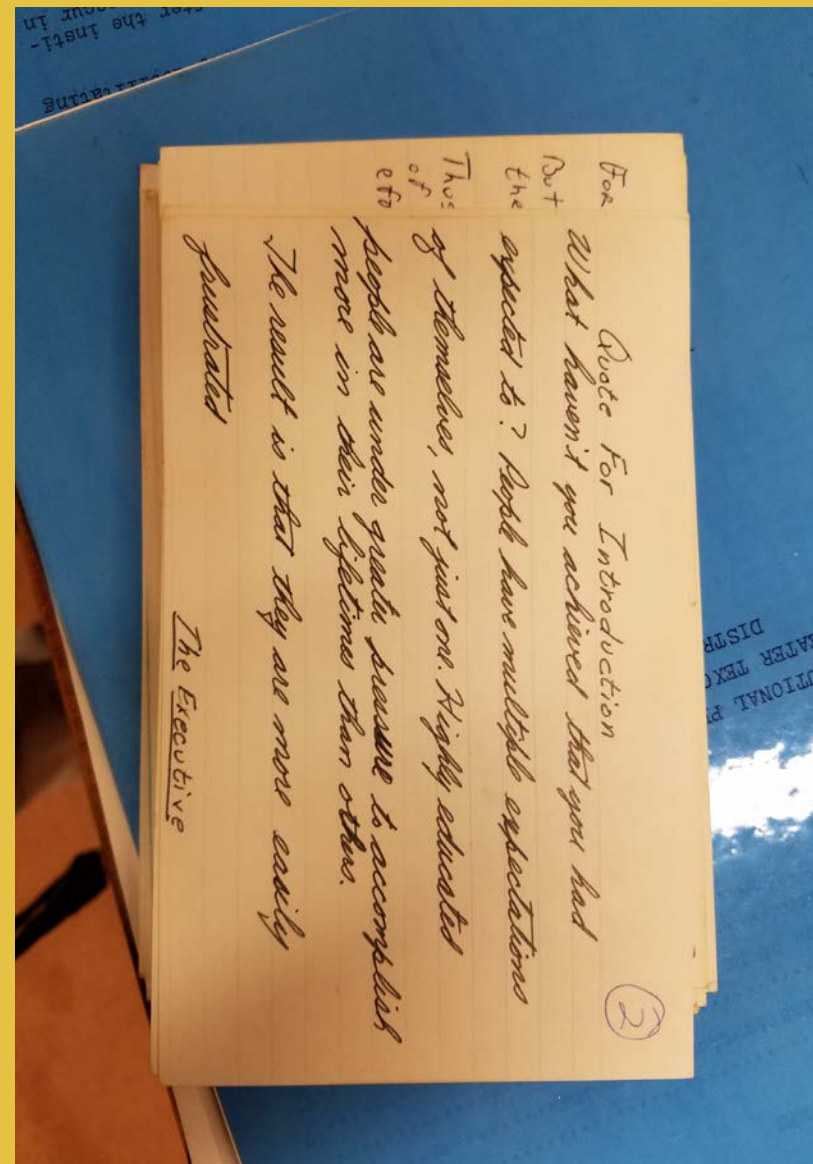
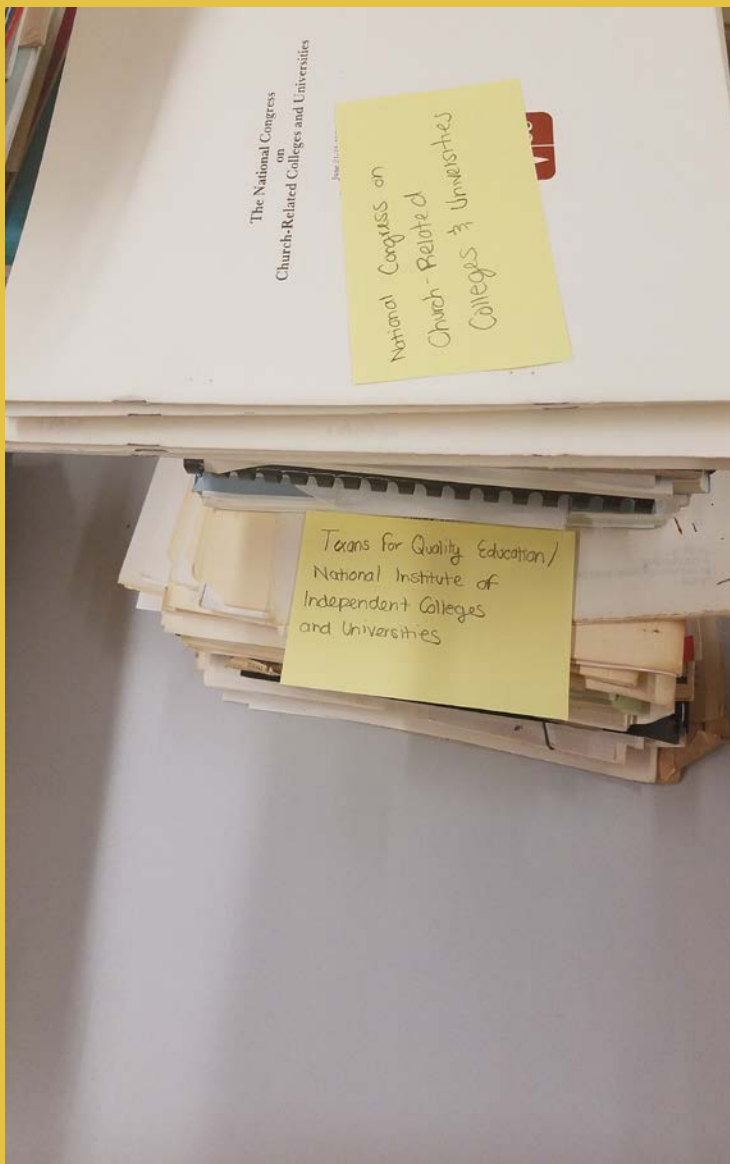
**Dr. John D. Moseley**  
President 1953-1978  
Chancellor 1978-1981

**ACKNOWLEDGE**  
Austin College  
Spring 1981



# The Reading Room

# Research Requests



the Financial Planning Office develops a financial aid program for you based upon your established financial need. Notice of the award is then mailed to you. (If analysis of your Financial Aid Form indicates you have no established need, you will be so notified.)

#### 4. Apply Early

The FAF and the Austin College Application for Financial Aid and Scholarships should be submitted as early as possible after January 1 to receive maximum consideration.

#### 5. Costs of Attendance

To assist you in anticipating the cost of attending Austin College, the following represents a typical budget for a full-time student entering in the 1988-89 academic year.

Basic Charge:	\$7250
Tuition and Fees _____	\$3025
Room and Board _____	\$10,275
Total _____	\$100-\$380
Books _____	\$300-955
Personal/Incidental _____	\$410
Transportation _____	

#### Important Forms

TWO FORMS MUST BE COMPLETED TO DETERMINE YOUR FINANCIAL NEED:

- (1) The Financial Aid Form of the College Scholarship Service.
- (2) The Austin College Application for Financial Aid and Scholarships.

ONE FORM IS NEEDED TO APPLY FOR THE COMPETITIVE AWARDS:  
The Austin College Application for Financial Aid and Scholarships.

The above forms are available from Austin College.  
Write:  
Office of Financial Planning

... by other people. (A.C. Bulletin 78-79) ...  
... is accomplished through a traditional academic ...  
... back along with with community living and I.D.  
... Academic Environment

#### Educational program:

Scholar must be free to pursue truth and ...  
... under the discipline and responsibility of ...  
... scholarly profession.

Vehicle of growth is a curriculum based ...  
... of liberal arts and sciences, in the perspective ...  
... the faith, with emphasis on individual and ...  
... ness of Knowledge, and incorporating enriching ...  
... experiences outside the classroom.

Approach to individualized educational planning ...  
... student is consultation with the mentor, ...  
... credit in I.D. during the senior year.

#### The educational program

- ① broadens scope of student development
- ② includes more varied and more student ...  
... modes of ...



# Preservation of Physical & Digital Material

# Reflection

- Preservation of historically significant and valuable documentation
- Effective research techniques
- The political state and public policy of Sherman and Texas during the late 1900s
- Austin College during Dr. John D. Moseley's Presidency & Chancellorship

